



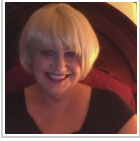
Roy Mobley

November 18, 2005

Roy was born April 13, 1938, in Hardin County, Iowa, the son of Walter H. and Gleneva Staley. He was united in marriage to Mary Ann Straw on August 15, 1973. He was employed in the ground maintenance department at the Cedar Falls Community School for 31 year, retiring in June of 2000.

Roy is survived by his wife, Mary Ann Straw of Evansdale, mother, Gleneva Mobley of Cedar Falls; daughter, Penny Mobley of Cedar Falls; step-daughters, Helen Howard (Jerry McCoy) of St. Louis, MO and Jodi Hanson of Evansdale; step-sons, Delbert (Cindy) Straw of Lene, TX and Harry (Becci) Straw of Rogers, AR; eleven grandchildren; nine great-grandchildren; and four brothers, Ralph Mobley of Waterloo, Raymond Mobley of New Hartford, Robert (Sharon) Mobley of Janesville, and Arlo Dean Mobley of Cedar Falls. Roy died Friday, November 18, 2005, at his home in Evansdale. He was preceded in death by his father; brother; Richard Mobley; two half-brothers; three half-sisters; and a great grandchild.

Tribute Wall



“ *Checking up on you! Glad you found happiness in your life... thanks for being a good friend and the Rum and Cokes! I think about your little brother Arlo Dean every now and then.... Bless his heart...it was so pure....*
Angie & Daughter Bridget

Anna Guynn Onken - February 01, 2020 at 04:23 AM